

# Home Safety Answer Sheet

## LEVEL 1

### Answers to *Make It Safe*

1. **Safe:** The younger child cannot reach the grapes and so is not in danger of choking.
2. **Unsafe:** The child is at risk on top of furniture near the edge of the deck and needs adult supervision.
3. **Safe:** There is a safety gate at the top and bottom of the stairs so the toddler cannot fall.
4. **Unsafe:** Turn pot handles inward so they cannot be reached by children or accidentally knocked. Place pots on the back burner.
5. **Safe:** The children are playing quietly and far away from the outdoor grill. An adult is watching the lit grill.
6. **Unsafe:** Lock cabinets that hold dangerous items and move unsafe items out of reach of crawling toddlers.
7. **Unsafe:** Avoid stretching a hair dryer cord over the sink.
8. **Unsafe:** Caution older children to not play with games that have small pieces when a younger child is crawling nearby.

### Answers to *Play It Safe*

**In the bedroom:** The radiator is behind a screen. The lamp cord is tied so that it is short and not hanging off the bookcase. Toys, games and books are safely put away, and the floor is clear of tripping hazards.

**Safe Actions:** Pick up toys from the floor. Stay away from heat sources.

**In the bathroom:** The medicine cabinet is locked. There is non-slip surfacing in the bottom of the tub and a safety handrail on the side of the tub. Soaps and colognes are put away on a high shelf. The hair dryer is away from the sink.

**Safe Actions:** Be careful getting into and out of a tub. Keep hair dryers and other electrical items away from water. Lock up medicines and keep shampoos and colognes out of reach of young children. Use a hair dryer away from water.

**In the garage:** Tools are hung up high or safely locked away. Flammable and poisonous liquids are placed on a high shelf. The work area is cleared.

**Safe Actions:** Keep tools and flammable or poisonous items out of children's reach. Walk carefully in work areas and keep them clear to prevent falls. Make sure children are supervised when working with tools. Be watchful when working with tools to keep children safe.

**In the kitchen:** The pot is on the back burner and its handle is turned away from the edge of the stove. The blender cord is not stretched or hanging off the counter. Knives are in a safe, high place.

**Safe Actions:** Walk carefully in a kitchen to make sure you are not in the way of anything hot. Stay away from stoves and ovens; you cannot tell if they are hot. Keep electric cords out of the reach of children. Use the back burner whenever possible and keep pot handles away from the edge of the stove.

**In the living area:** Safety gates are at the top and bottom of the stairs. The cord from the blind is carefully stored. A safety screen is in front of the fireplace. The lamp cord is not obstructing a path or hanging from the mantle. Knickknacks are on a high shelf.











**Safe Actions:** Use safety gates to keep young children safe from stairs. Play with toys, not the cords of blinds or electric cords. Things on high shelves are off limits. Keep fireplace screens in place.

# Home Safety Answer Sheet

**In the yard:** The walking path is clear and well maintained. The swing set is cemented into the ground, and there is soft material underneath. The swing is not too close to trees or other hazards. There are no nuts or bolts protruding from the swing-set structure.

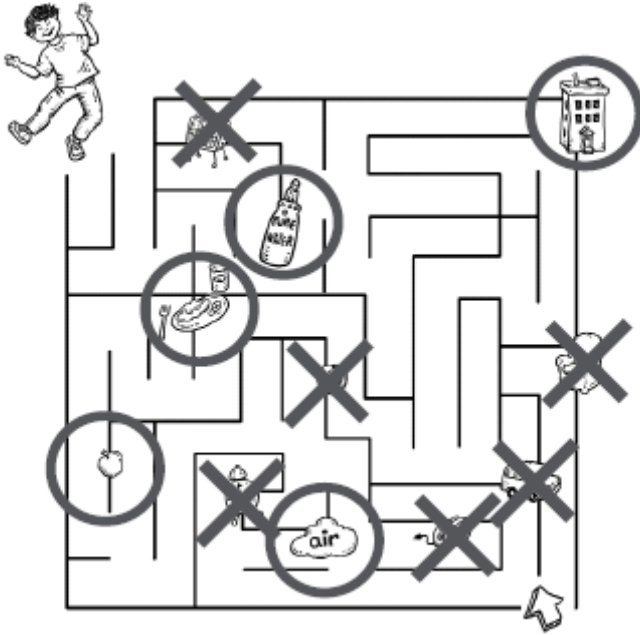
**Safe Actions:** Watch where you are walking outdoors. Always swing safely—sit down and hold on.

## Answers to Heat Sensors

				 Sometimes Cannot Tell
	See the color and the flames.	Hear the flames crackle.	Smell the burning wood.	Coals and ashes may still be hot, even if they are not glowing and there are no flames.
	See the steam coming from the soup.			Soup may be too hot to eat, even if there is no steam.
	See glowing lights.	Hear a cooking timer.	Smell food cooking.	Stovetop and oven may be hot even if they do not look hot.
	See the color and the flames.		Smell the burning wax.	Candles may be hot even after the flames are out and the smoke has gone.
	See the smoke.	Hear the match strike.	Smell the burning match and sulphur.	The match stays hot for a while, even after it has been extinguished.
	See the steam.			Water may be too hot to touch, even if there is no steam.

# Home Safety Answer Sheet

## Answers to *What We Need To Live*



## Answers to *Make It Safer*

See Page 3 of activity for answer chart.

## Answers to *Poison Dangers*

The skull and crossbones of the rebus message mean **poison**, STAY AWAY! Today, we learned that poison comes in many forms. If people eat or drink cleaning products, the wrong medications or spoiled food, they become sick because they **ingest** poison. Sometimes, people touch dangerous plants and **absorb** poison through their skin. If bees sting or snakes bite, they **inject** poison. Sometimes people **inhale** gas that is poison. Can you unscramble the words below to find out the most important thing to know about poison? **STAY AWAY!**

## LEVEL 2

### Answers to *If the Balloon Fills With Helium, Then...*

- If the balloon (1) fills with helium, then it will rise, lifting the door (2) of the mouse house.
- If the door (2) of the mouse house opens, then the mouse will come out onto its porch (3) and eat the cheese (4).
- If the cheese (4) becomes lighter in weight, then the large hand (5) will fall.
- If the hand (5) hits the button (6), then the button will make the horn (7) blare.
- If the horn (7) blares, then it will startle the cat (8) sleeping in the tree.
- If the cat (8) is startled, then it will fall into the basket (9) balanced on one end of the lever (10).

# Home Safety Answer Sheet

- If the lever (10) tips, then it will lift the door (11) of the woodchuck's cage.
- If the door (11) of the cage opens, then the woodchuck (12) will chew on the tip of the pencil (13), exposing the lead.
- If the machine fails to sharpen the pencil, then find an ink pen (14).

## **Answers to *An Excess of Injuries* may include—**

**Scenario 1:** Sara Jane and Gillian should play running games in wide open areas away from other games or playground equipment. Although Gillian wanted to keep up with Sara Jane, it was more important to watch where she was going.

**Scenario 2:** It is dangerous to eat while talking, laughing or running. Always let your friends chew and swallow their food before you tell them a joke that will make them laugh out loud.

**Scenario 3:** Susan should have turned off the stove and taken Frieda with her when she went to get the phone. Make sure that young children are never left alone in the kitchen while things are cooking on the stove. Never be distracted by the phone, the doorbell or other people when you are in charge of younger children. Watching them is your most important job.

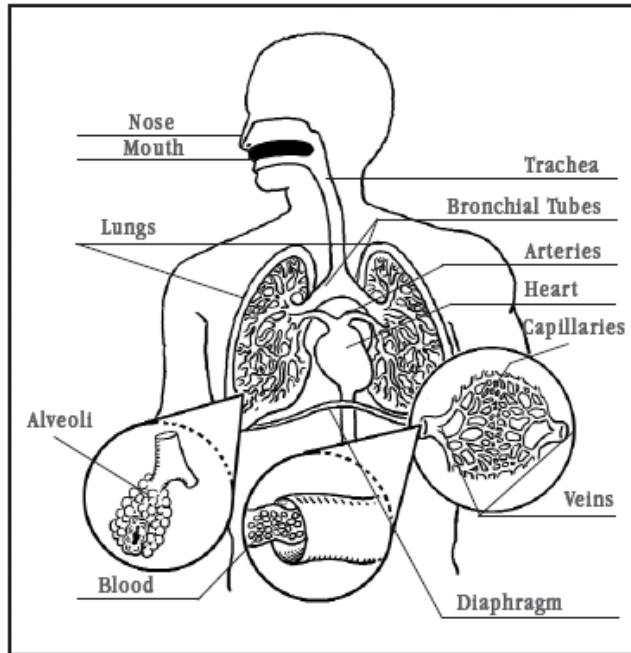
**Scenario 4:** Hassan's father should never have put a poisonous liquid in a container that usually holds liquids that are safe to drink. Always put flammable or poisonous liquids in designated containers that clearly identify the contents. Danny should know to drink only from bottles he knows are safe.

**Scenario 5:** Kacy should never have let herself get distracted, not even for a moment, when watching a younger child, especially around water. Young children can move out of sight and reach quickly and can drown in less than an inch of water.

**Scenario 6:** José should never have gotten a sharp knife from the kitchen, and Enrique should never have used it carelessly. Always ask an adult to help when doing something that might be too difficult, and always use the right tool.

## **Answers to *Transporting Oxygen Through the Body***

# Home Safety Answer Sheet



## Answers to *Falling Physics*

1. The girl's foot has hit an obstacle, stopping her foot's momentum. However, the inertia of her upper body keeps it moving forward. This positions her center of gravity away from her supporting leg, causing her to lose her balance and fall.
2. The girl's foot slipped on the icy sidewalk, which did not provide sufficient friction for her to stop or at least to slow her forward motion. She is falling because her center of gravity is not over a supporting leg. She will topple over. Her outstretched arms will help slow the fall by increasing the rotational inertia.
3. The boy has lost his balance. To slow his fall, he has bent his knees to lower his center of gravity, and he has extended his arms to prevent his head from hitting the floor.
4. The girl was running down the hallway on a highly polished floor. Due to the lack of friction, her feet have slipped from under her, and she is sliding while dragging her arm and extending her leg to reduce her momentum. She is keeping her head up to prevent it from hitting the floor. She will hit the wall, which will stop her forward momentum abruptly.
5. The boy on the left is stable because his weight is positioned directly over the supportive base of his widespread legs. By pushing the other boy, the boy on the left has changed the other boy's motion from forward to backward. The other boy begins to fall because his center of gravity is not directly over his support. By extending his arms and legs, he will increase the rotational inertia and slow his fall, which will lessen the impact. This is a very dangerous situation because the boy is falling from a height greater than his own height. Gravity will accelerate him for a longer period of time and he will land with greater velocity and force than he would have if he'd fallen from a shorter height.

## LEVEL 3

### Possible Answers to *Burn Hazards*

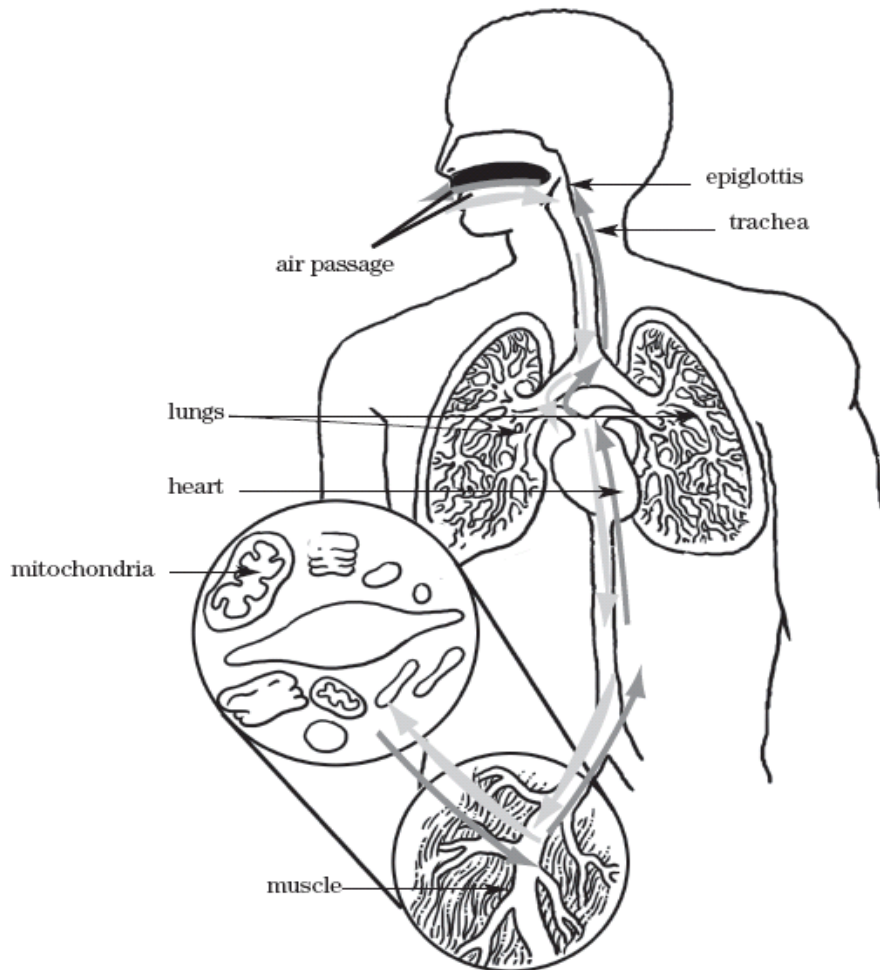
## Home Safety Answer Sheet

- Temperature of hot water heater too high
- Electric appliances too close to water sources
- Hot pots on front burners with handles turned outward
- Food from the microwave oven
- Oven door
- Chemical substances such as ammonia, bleach, drain cleaner and nail polish remover
- Matches, candles, etc.
- Irons and room heaters (especially if plugged in while unattended)
- Fireplace
- Exposed water pipes and metal radiators

# Home Safety Answer Sheet

## Answer to *Transporting O<sub>2</sub> Through the Body*

Have children draw red arrows entering the nose and mouth and moving through the trachea into the lungs, and from the lungs into the blood vessels. Continue to draw the red arrows through the blood vessels into muscle cells. Once in the muscle cells the red arrows move into the mitochondria. Have children draw blue arrows to show the process in reverse as blood carries carbon dioxide and water from the cells back to the lungs.



# Home Safety Answer Sheet

## Answers to *Preventing Breathing Emergencies*

(Student answers may include these and other responses.)

Age Group	Risky Behavior	How to Prevent Breathing Emergencies
0-3	Putting everything that will fit into mouth. Becoming entangled with ropes or cords in bed or play areas. Being unsupervised around water.	Keep inappropriate objects out of babies' reach. Always supervise children around water.
4-6	Choking on food. Eating while running. Playing with ropes or drapery or blind cords. Playing with plastic bags.	Have children eat only while sitting quietly. Have them chew food well. Keep drapery cords, plastic bags, etc. away from children.
7-9	Choking on food. Eating while running. Playing with ropes or drapery or blind cords. Playing with plastic bags.	Have children eat only while sitting quietly. Have them chew food well. Keep drapery cords, plastic bags, etc., away from children.
10-14	Experimenting with inhalation of volatile substances to get high.	Practice saying "no." Learn to resist peer pressure.
15 and older	Experimenting with inhalation of volatile substances to get high. Abusing alcohol.	Practice saying "no." Learn to resist peer pressure.